

Operating- and Installation Instructions

S-400/230

Function:

The **osf** control S-400/230 enables a time-dependent switching on- and off of a 400V three-phase current filter pump **or a 230V alternating current filter pump**. Setting of the time and individual switch times are carried out according to the enclosed operating instructions of the timer.

With the key in the front lid you can:

0 - I Switch on- and off the functions of the device. The device is switched off in the neutral position of the switch. **Attention, thus the control is not all-pole disconnected from the mains.**



Switch the device to continuous operation.



Switch the device to automatic operation (timer).

Technical specification:

Dimension:	175mm x 125mm x 86mm
Operating voltage:	400V/50Hz
or	230V/50Hz
Power consumption of the control	ca.1.5VA
Breaking capacity:	max. 8A (AC3)
System of protection:	IP 40

Installation:

The control unit must be installed humidity protected according to its system of protection.

Safety instruction:

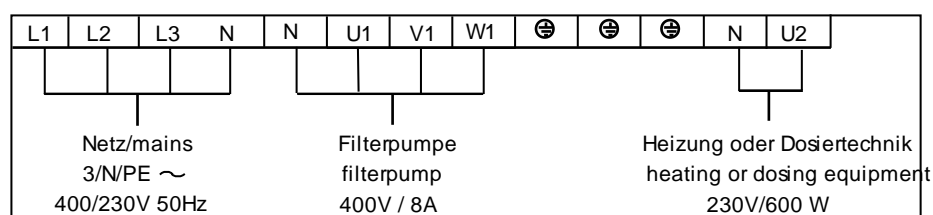
Any service- and maintenance work may only be carried out with a dead circuit control and by an authorized electrical specialist. Before opening the control, it must be switched to zero potential!

Electrical connection:

The electrical connection may only be carried out by an accredited electrical specialist! The following connecting diagram and the prevailing safety regulations must be observed. Any existing components must be included in the equipotential bonding.

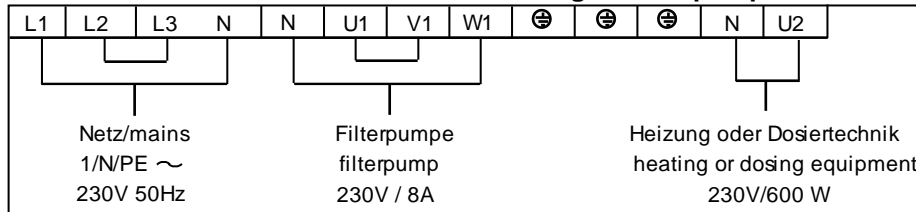
The connecting terminals for the heating or the dosing equipment (U2) are only live during filter operation.

Connection of a 400V three-phase current pump



Please note reverse side!

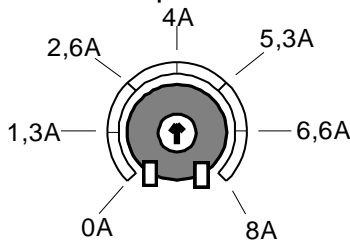
Connection of a 230V alternating current pump



So that the electronic motor protection works properly, the motor current must be led via all three switch contacts of the filter control (clamps L2 and L3 as well as U1 and V1 are bridged). **The connection of the pump is carried out at clamp W1.**

Electronic motor protection:

Adjusting controller for motor protection

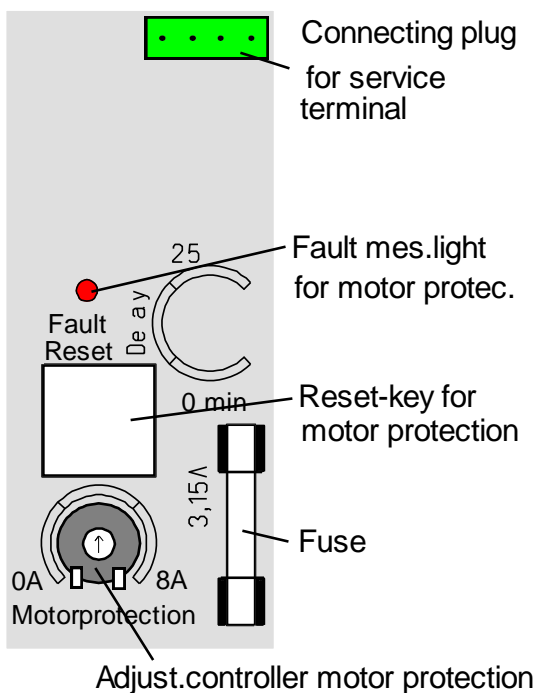


The filter pump is protected against damage caused by overload by a continuously adjustable electronic motor protection. For this the motor protection must be adjusted to the nominal current of the filter pump (see type plate of the pump). The adjusting controller is located right down on the board. If the nominal current of the filter pump is unknown, the motor protection can be set according to the following process:

1. Turn adjusting screw of the motor protection to the right stop .
2. Switch pump on.
3. Slowly turn adjusting screw anti-clockwise until the motor protection triggers and the red error message light flashes.
4. Turn adjusting screw clockwise by some angular degrees (approx. 10%).

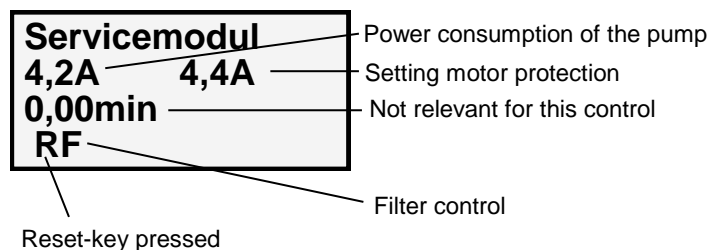
Acknowledge error message with the key "Reset". It is located between the adjusting controller and the error message light.

Drawing



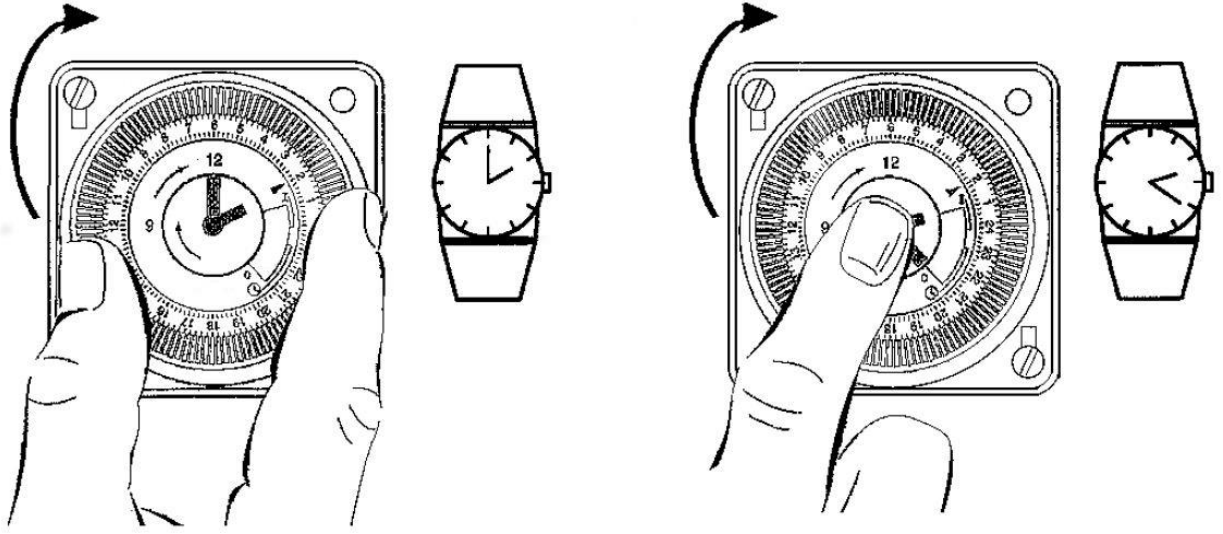
Service-Terminal

To check the control as well as to facilitate an initial operation and error diagnosis, an **ISI** service terminal (item no. 3010000900) can be connected to the control. The connector plug for this is located on the circuit board (top right) inside the device. **Before opening the housing and plugging the service terminal, it is absolutely necessary to switch the control to zero potential!** After switching on the control unit, the display indicates the following diagnostic text:

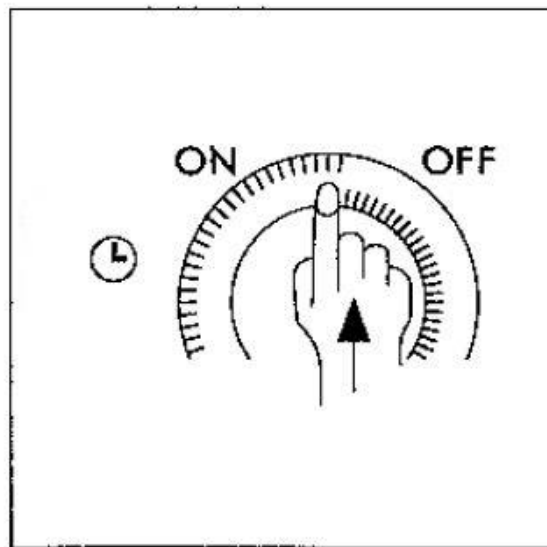


Operation of the timer

Set timer



Set switching timer



Further information can be found on the Internet at the following address

<https://osf.de/download/documents/documents.php?device=S-400&subdir=none>



We wish you a lot of fun and relaxation in your swimming pool.

osf Hansjürgen Meier
Elektrotechnik und Elektronik GmbH & Co KG
Eichendorffstraße 6
D-32339 Espelkamp
E-Mail: info@osf.de
Internet: www.osf.de

Subject to alterations!

osf Januar 22